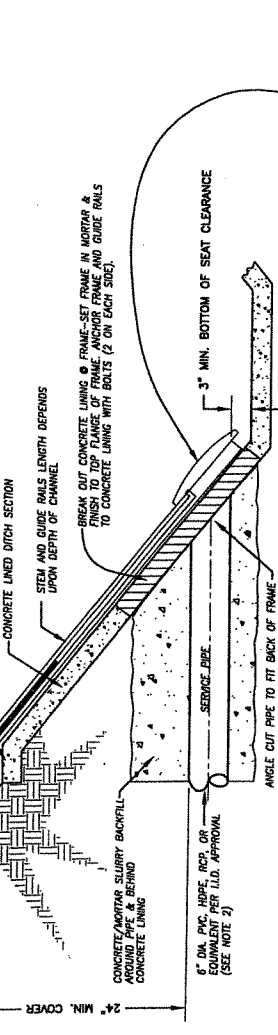


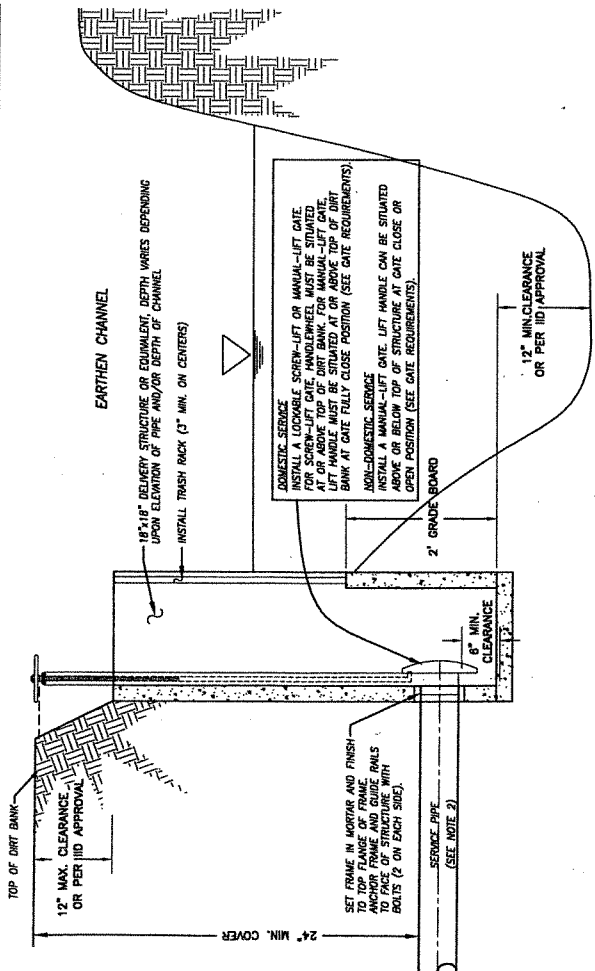
DOMESTIC SERVICE
 INSTALL A LOCKABLE SCREW-LIFT GATE OR MANUAL-LIFT GATE FOR SCREW-LIFT GATE. INSTALL GATE TO ACHIEVE OVERALL DEPTH AND MAINTAIN MINIMUM CLEARANCE REQUIRED BETWEEN HANDWHEEL AND TOP OF CONCRETE LINING FOR SCREW-LIFT OPERATIONS. HANDWHEEL MUST BE SITUATED ABOVE CONCRETE RAIL AND MUST NOT EXTEND TO TOP OF CONCRETE LINING. MANUAL-LIFT GATE MUST BE SITUATED ABOVE CONCRETE RAIL AT GATE FULLY CLOSE POSITION (SEE GATE REQUIREMENTS).

NON-DOMESTIC SERVICE
 INSTALL A MANUAL-LIFT GATE. LEFT HANDLE CAN BE SITUATED ABOVE OR BELOW CONCRETE RAIL AT GATE CLOSE OR OPEN POSITION. LOCK IS NOT REQUIRED FOR THIS SERVICE (SEE GATE REQUIREMENTS).

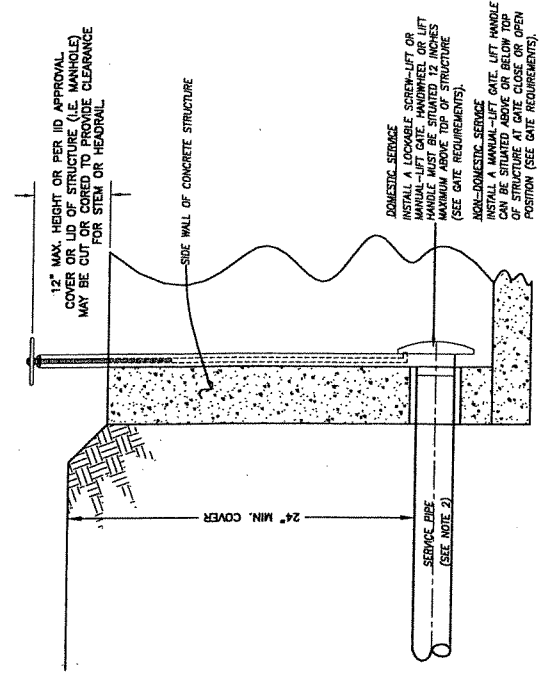


SERVICE PIPE CONNECTING CONCRETE-LINED CHANNEL

- GATE REQUIREMENTS**
- SERVICE TO BE FOR DOMESTIC PURPOSES
- SCREEN LIFT GATE "WATERMAN" MODEL C-10 OR EQUIVALENT WITH LOCKING DEVICE (STEEL CHAIN AND PAD LOCK)
 - SCREW-LIFT GATE WITH ANCHOR FRAME AND GUIDE RAILS TO CONCRETE LINING WITH BOLTS (2 ON EACH SIDE)
 - MANUAL-LIFT GATE WITH ANCHOR FRAME AND GUIDE RAILS TO CONCRETE LINING WITH BOLTS (2 ON EACH SIDE)
 - USE ANY OF THE FOLLOWING MANUAL-LIFT GATES (SIZE DEPENDS UPON SIZE AND TYPE OF PIPES)
 - "WATERMAN" MODEL C-8 SLIDE DITCH GATE WITH GASKET SEAT
 - "TRESNO" TOGGLE GATE
 - "TRESNO" KAM-LOK GATE
 - OR EQUIVALENT GATE
- SERVICE TO BE FOR IRRIGATION OR NON-DOMESTIC USE
- "WATERMAN" MODEL C-8 SLIDE DITCH GATE WITH GASKET SEAT
 - "TRESNO" TOGGLE GATE
 - "TRESNO" KAM-LOK GATE
 - OR EQUIVALENT GATE



SERVICE PIPE CONNECTING EARTHEN CHANNEL



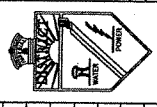
SERVICE PIPE CONNECTING CONCRETE STRUCTURES
 (I.E. HEADWALL, CHECK, CONTROL STRUCTURE, MANHOLE, STANDPIPE, ETC.)

NOTES:

- AN ENCROACHMENT PERMIT IS REQUIRED BY THE IMPERIAL IRRIGATION DISTRICT (IID) FOR SERVICE PIPE CONNECTIONS (GOVERNMENTAL OR PRIVATE).
- ALL NEW SERVICE PIPE CONNECTIONS MUST COMPLY WITH THIS STANDARD DRAWING. DESIGN AND CONSTRUCTION OF SERVICE PIPE ARE SUBJECT TO THE REQUIREMENTS OF THE STANDARD DETAILS SHOWN ON THIS DRAWING. DESIGN AND CONSTRUCTION DRAWINGS OR PLANS OF SERVICE PIPE MUST BE SUBMITTED FOR REVIEW AND APPROVAL. IN ADDITION, SERVICE PIPE CONNECTION MUST COMPLY WITH IID REGULATION NO. 21. SERVICE PIPE IS RESTRICTED TO 6 INCHES IN DIAMETER UNLESS APPROVED BY THE IID'S WATER DEPARTMENT MANAGER.
- CONSTRUCTION SURVEY DATA, REDLINED DRAWINGS OR PLANS, AS BUILT DATA, ETC. MUST BE SUBMITTED PRIOR TO THE ISSUANCE OF THE ENCROACHMENT PERMIT.
- CANAL OUTAGE MAY BE REQUIRED TO FACILITATE INSTALLATION DEPENDING UPON CONNECTION OR SERVICE LOCATION OR DEPTH.
- 85% MODIFIED PROCTOR DENSITY COMPACTION (IN TRENCHES AND AROUND STRUCTURES) IS REQUIRED INSIDE IID RIGHT-OF-WAY.
- BALL VALVE INSTALLATION ALTERNATIVE TO MECHANICAL GATE PER IID APPROVAL FOR SERVICE PIPE 2 INCHES IN DIAMETER OR SMALLER CONNECTING CONCRETE-LINED CANAL OR CONCRETE STRUCTURE. (SEE SHEET 2)

REFERENCE DWGS.

NO.	DATE	BY	CHKD.	APPD.	ISSUED FOR
1	7-22-2002	D.D.			DISTRIBUTION
2					ISSUED FOR
3					
4					
5					
6					



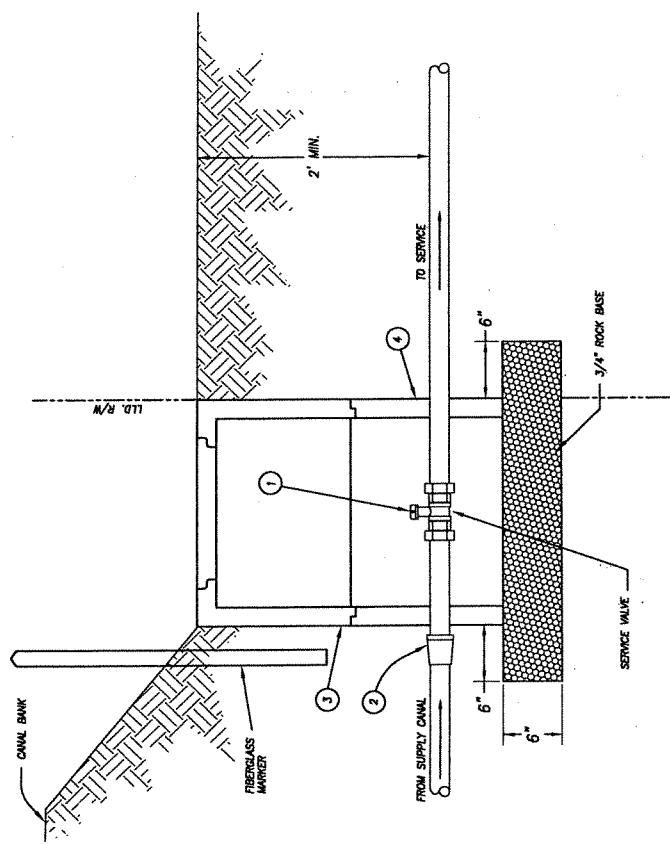
SHEET 1 OF 2
 IMPERIAL IRRIGATION DISTRICT
 WATER DEPARTMENT
 IMPERIAL, CALIFORNIA
SERVICE PIPE CONNECTION STANDARD
 SMALL PARCEL SERVICE
 DRAWN BY: [Signature] DATE: 7-22-2002
 CHECKED BY: [Signature] SCALE: N/S
 APPROVED BY: [Signature] FIELD BOOK: [Blank]
 DWG. No. 20F-1394

REQUIRED MATERIAL

ITEM NO.	QTY. REQ.	SIZE AND DESCRIPTION	REMARKS
1	1	BALL VALVE-LOCKABLE, SPEARS TRUE UNION 2000 OR EQUAL	SIZE TO MATCH SERVICE PIPE DIAMETER
2	1	STRAIGHT COUPLING	SIZE TO MATCH SERVICE PIPE DIAMETER
3	1	12" x 20" UTILITY BOX & LID, H-20 TRAFFIC RATED	
4	AS REQD	12" x 20" UTILITY BOX 12" EXTENSION	

NOTES:

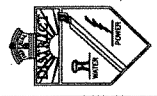
- AN ENCROACHMENT PERMIT IS REQUIRED BY THE IMPERIAL IRRIGATION DISTRICT (IID) FOR SERVICE PIPE CONNECTIONS (GOVERNMENTAL OR PRIVATE).
- ALL NEW SERVICE PIPE CONNECTIONS MUST COMPLY WITH THIS STANDARD DRAWING, DESIGN AND CONSTRUCTION OF SERVICE PIPE ARE SUBJECT TO THE REQUIREMENTS OF THE STANDARD DETAILS SHOWN ON THIS DRAWING, DESIGN AND CONSTRUCTION DRAWINGS OR PLANS OF SERVICE PIPE MUST BE SUBMITTED FOR REVIEW AND APPROVAL. IN ADDITION, SERVICE PIPE CONNECTION MUST COMPLY WITH IID REGULATION NO. 21. SERVICE PIPE IS RESTRICTED TO 6 INCHES IN DIAMETER UNLESS APPROVED BY THE IID'S WATER DEPARTMENT MANAGER.
- CONSTRUCTION SURVEY DATA, REDLINED DRAWINGS OR PLANS, AS BUILT DATA, ETC. MUST BE SUBMITTED PRIOR TO THE ISSUANCE OF THE ENCROACHMENT PERMIT.
- CANAL OUTAGE MAY BE REQUIRED TO FACILITATE INSTALLATION DEPENDING UPON CONNECTION OR SERVICE LOCATION OR DEPTH.
- 85% MODIFIED PROCTOR DENSITY COMPACTION (IN TRENCHES AND AROUND STRUCTURES) IS REQUIRED INSIDE IID RIGHT-OF-WAY.
- BALL VALVE INSTALLATION ALTERNATIVE TO MECHANICAL GATE PER IID APPROVAL FOR SERVICE PIPE 2 INCHES IN DIAMETER OR SMALLER CONNECTING CONCRETE-LINED CANAL OR CONG. STRUCTURE. FOR SERVICE PIPE LARGER THAN 2 INCHES IN DIAMETER, SEE SHEET 1.



BALL VALVE INSTALLATION ALTERNATIVE TO MECHANICAL GATE PER IID APPROVAL FOR SERVICE PIPE 2 INCHES IN DIAMETER OR SMALLER CONNECTING CONCRETE-LINED CANAL OR CONCRETE STRUCTURE

REFERENCE DWGS.

6									
5									
4									
3									
2									
1	1	1-2000 IID	D.D.						



SHEET **2** OF **2**

IMPERIAL IRRIGATION DISTRICT
WATER DEPARTMENT
IMPERIAL, CALIFORNIA

SERVICE PIPE CONNECTION STANDARD
SMALL PARCEL SERVICE

DRAWN BY: D.D. DATE: 3-20-2003
CHECKED BY: SCALE: 1/2" = 1'-0"
DESIGNED BY: DWG. No. 20F-1394
FIELD BOOK: