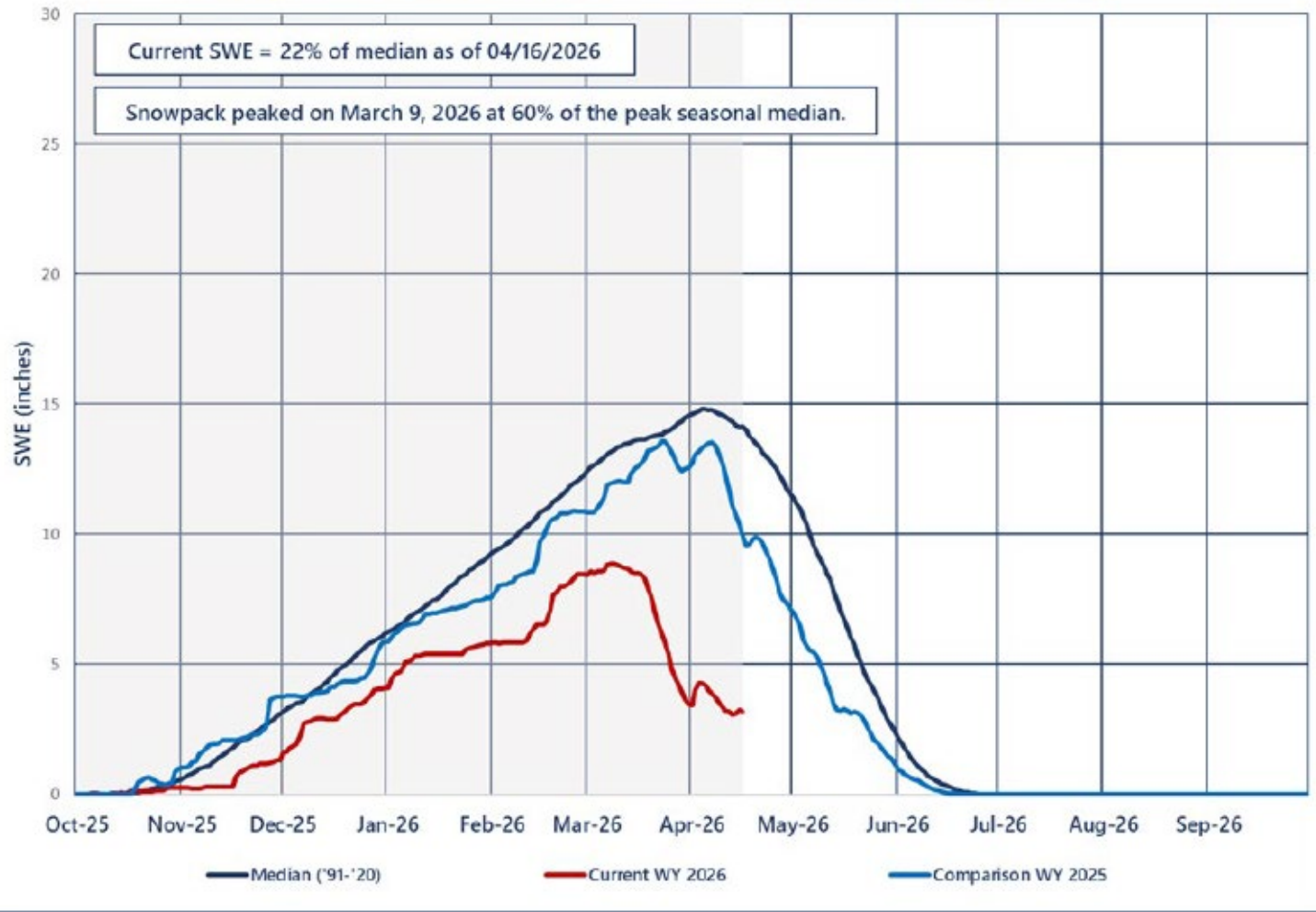

Colorado River Update

Tina Anderholt Shields, PE
Water Manager
May 5, 2026



Colorado River Basin Above Lake Powell Snow Water Equivalent

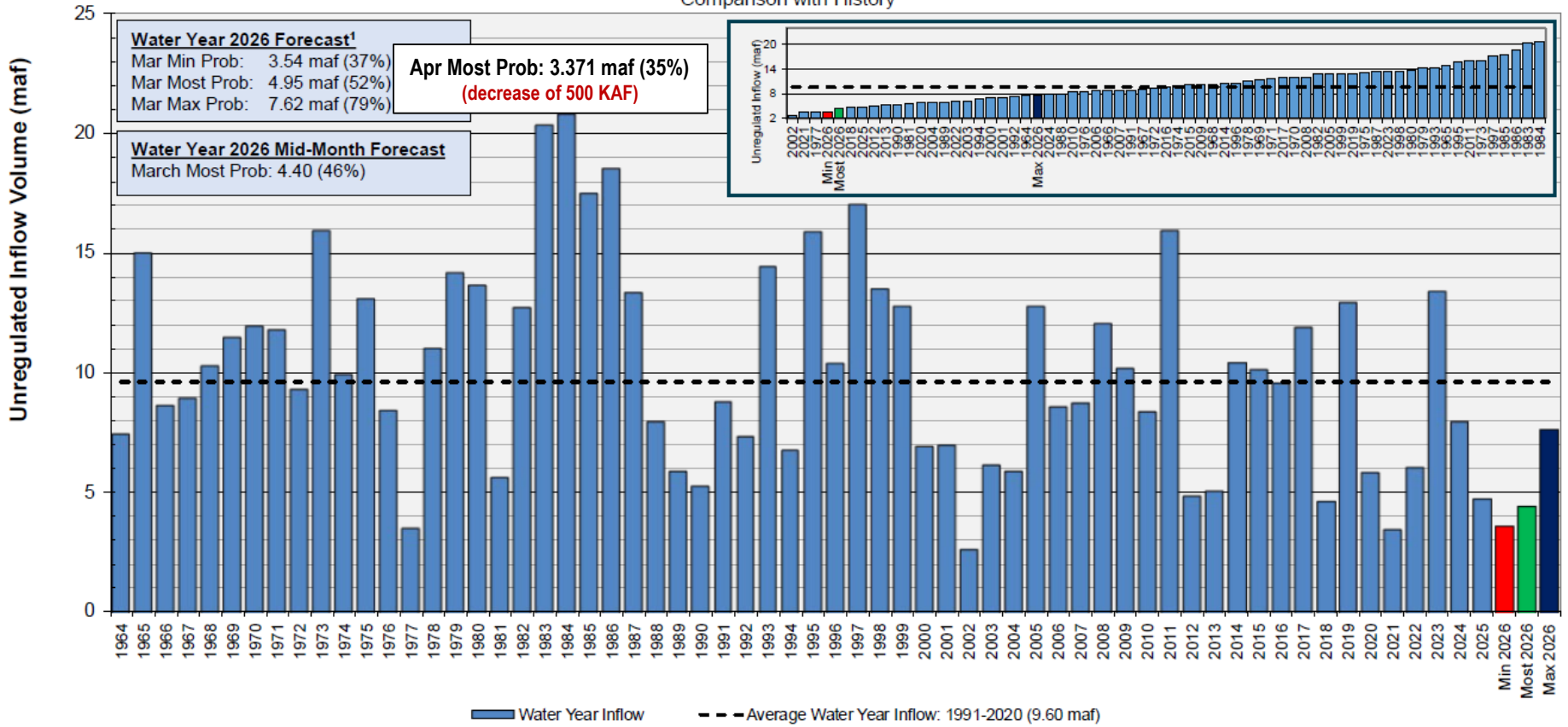


IID

A century of service.

Lake Powell Water Year Unregulated Inflow

as of March 16, 2026
Comparison with History

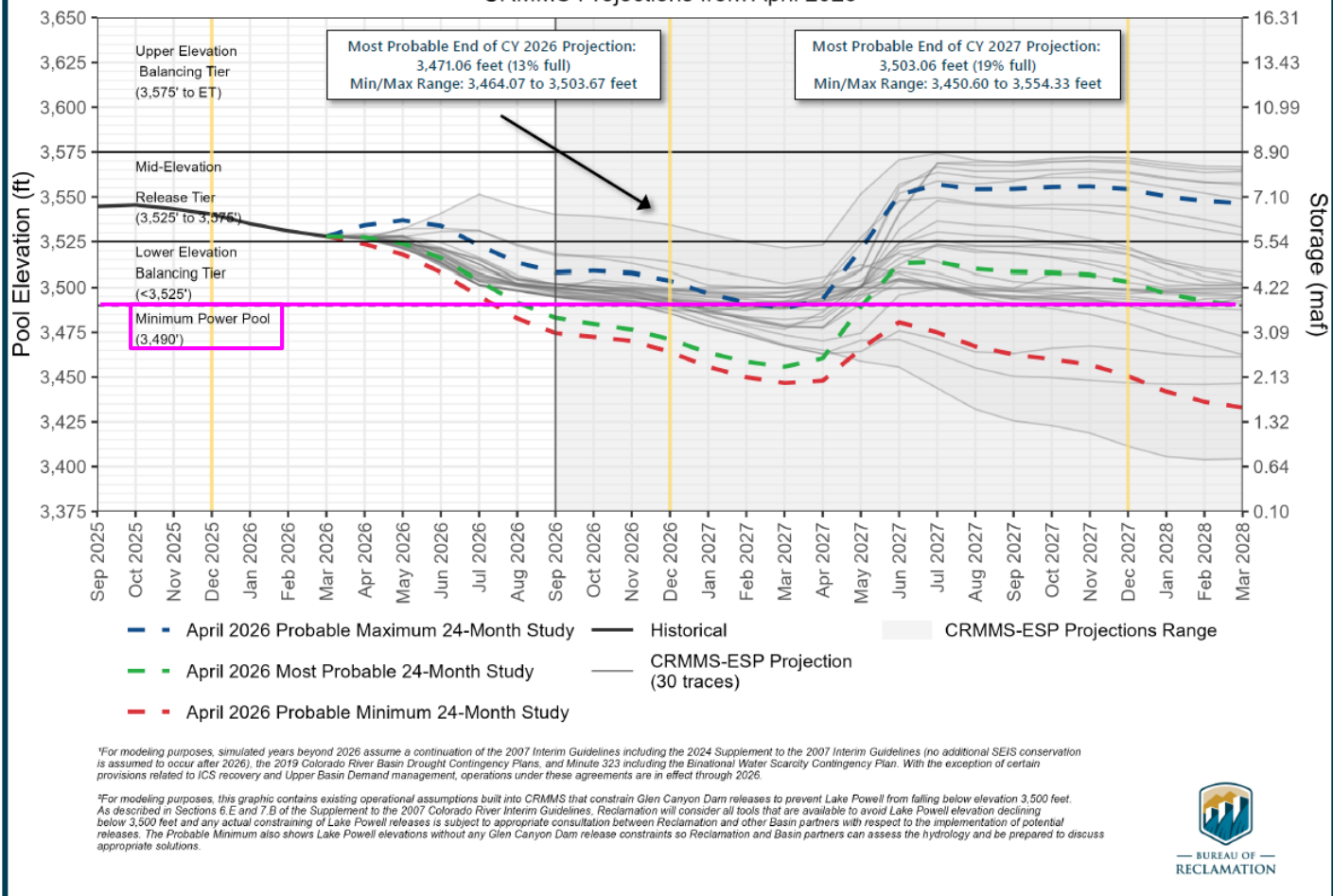


¹Water Year statistics are based on the 30-year period of record from 1991-2020.



Lake Powell End-of-Month Elevations^{1,2}

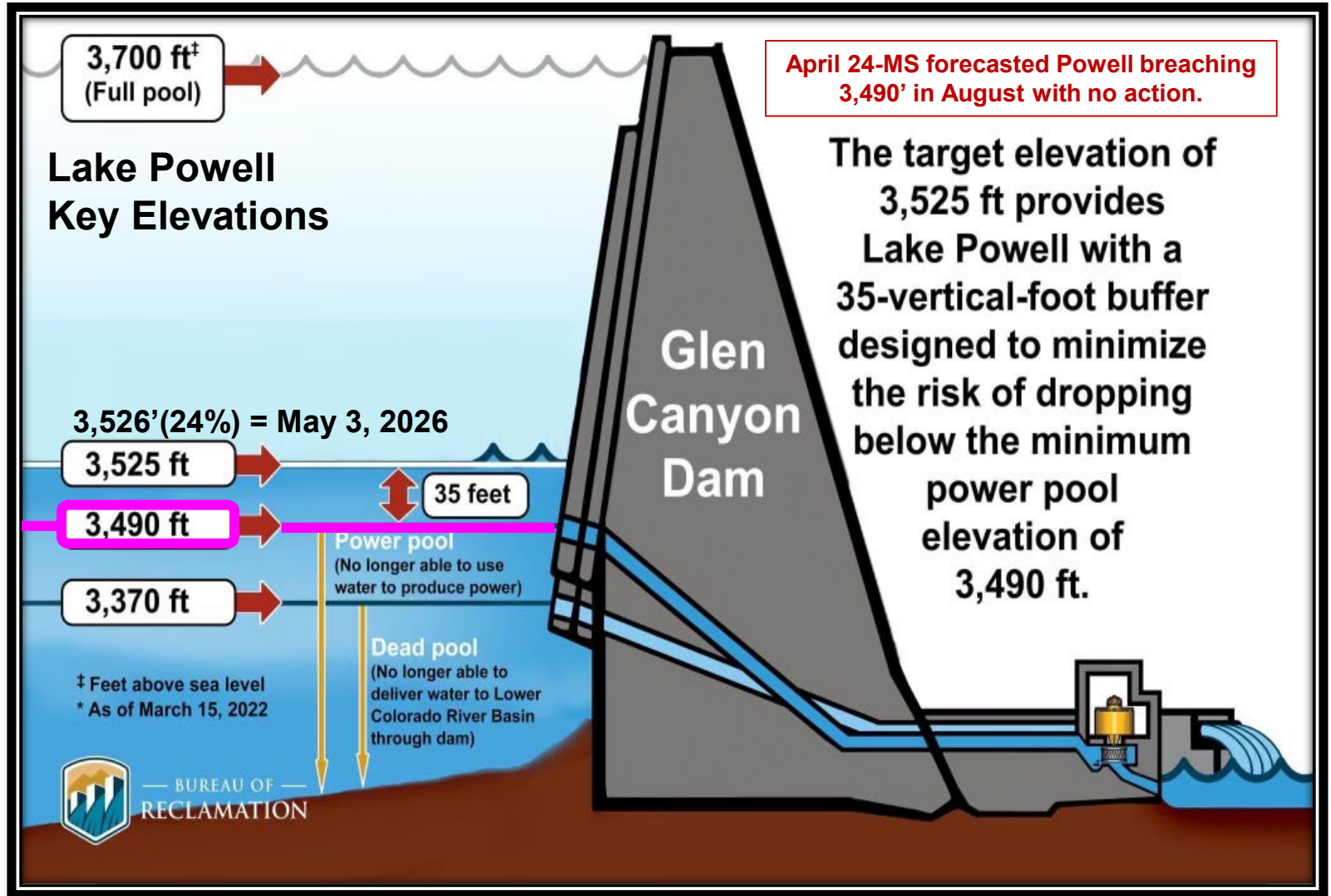
CRMMS Projections from April 2026



¹For modeling purposes, simulated years beyond 2026 assume a continuation of the 2007 Interim Guidelines including the 2024 Supplement to the 2007 Interim Guidelines (no additional SEIS conservation is assumed to occur after 2026), the 2019 Colorado River Basin Drought Contingency Plans, and Minute 323 including the Binational Water Scarcity Contingency Plan. With the exception of certain provisions related to ICS recovery and Upper Basin Demand management, operations under these agreements are in effect through 2026.

²For modeling purposes, this graphic contains existing operational assumptions built into CRMMS that constrain Glen Canyon Dam releases to prevent Lake Powell from falling below elevation 3,500 feet. As described in Sections 6.E and 7.B of the Supplement to the 2007 Colorado River Interim Guidelines, Reclamation will consider all tools that are available to avoid Lake Powell elevation declining below 3,500 feet and any actual constraining of Lake Powell releases is subject to appropriate consultation between Reclamation and other Basin partners with respect to the implementation of potential releases. The Probable Minimum also shows Lake Powell elevations without any Glen Canyon Dam release constraints so Reclamation and Basin partners can assess the hydrology and be prepared to discuss appropriate solutions.

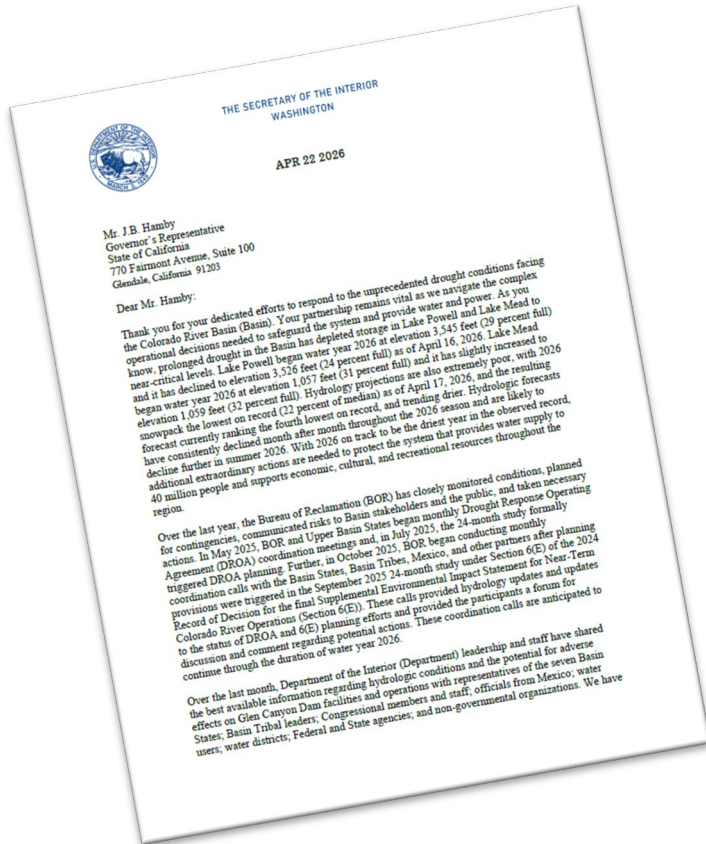




IID

A century of service.

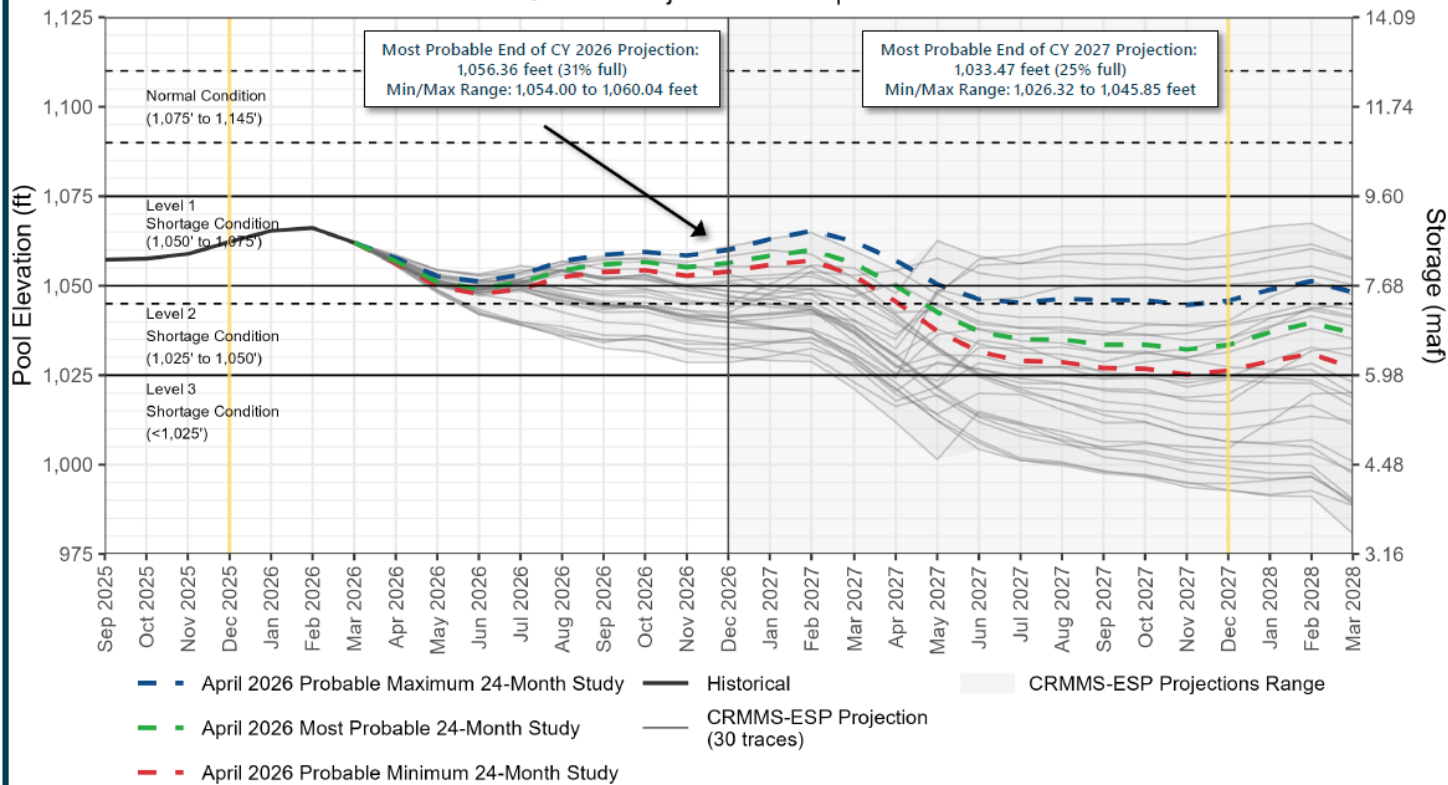
Recent Federal Drought Response Actions



- A nearly 1.5 million acre-feet reduction in Lake Powell releases into Lake Mead, from 7.48 million acre-feet to 6 million acre-feet, for Water Year 2026
- Additional releases from Upper Basin reservoirs, known as the Upper Initial Units (UIUs), in the range of 660,000 – 1,000,000 acre-feet to stabilize Lake Powell elevations and protect critical infrastructure necessary to deliver water to the Lower Basin and Mexico



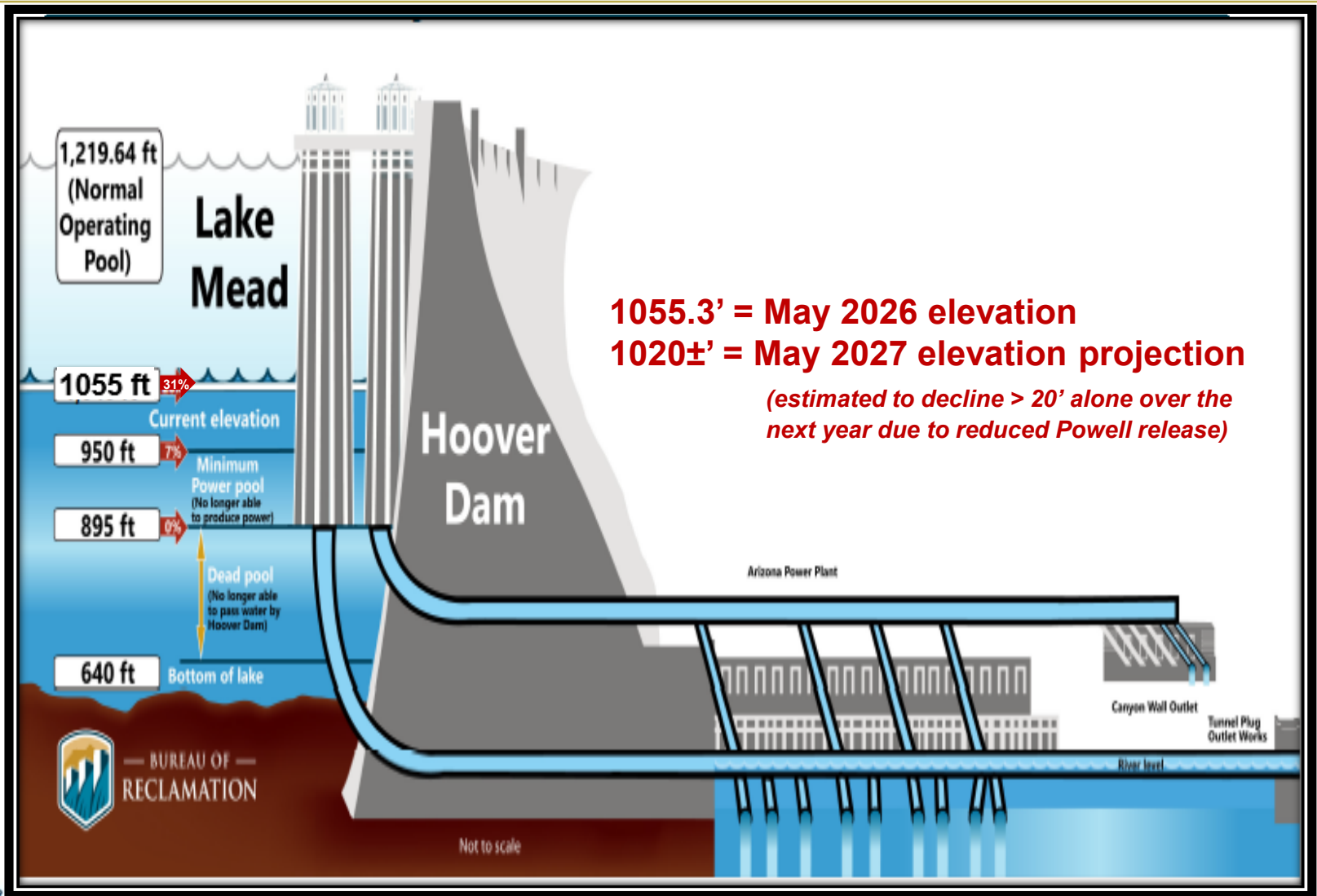
Lake Mead End-of-Month Elevations^{1,2} CRMMS Projections from April 2026



¹For modeling purposes, simulated years beyond 2026 assume a continuation of the 2007 Interim Guidelines including the 2024 Supplement to the 2007 Interim Guidelines (no additional SEIS conservation is assumed to occur after 2026), the 2019 Colorado River Basin Drought Contingency Plans, and Minute 323 including the Binational Water Scarcity Contingency Plan. With the exception of certain provisions related to ICS recovery and Upper Basin Demand management, operations under these agreements are in effect through 2026.

²For modeling purposes, this graphic contains existing operational assumptions built into CRMMS that constrain Glen Canyon Dam releases to prevent Lake Powell from falling below elevation 3,500 feet. As described in Sections 6 E and 7 B of the Supplement to the 2007 Colorado River Interim Guidelines, Reclamation will consider all tools that are available to avoid Lake Powell elevation declining below 3,500 feet and any actual operations of Lake Powell elevations subject to appropriate consultation between Reclamation and other Basin participants in respect to the implementation of potential releases. The Probable Minimum also shows Lake Powell elevations without any Glen Canyon Dam release constraints so Reclamation and Basin partners can assess the hydrology and be prepared to discuss appropriate solutions.





IID

A century of service.

www.iid.com

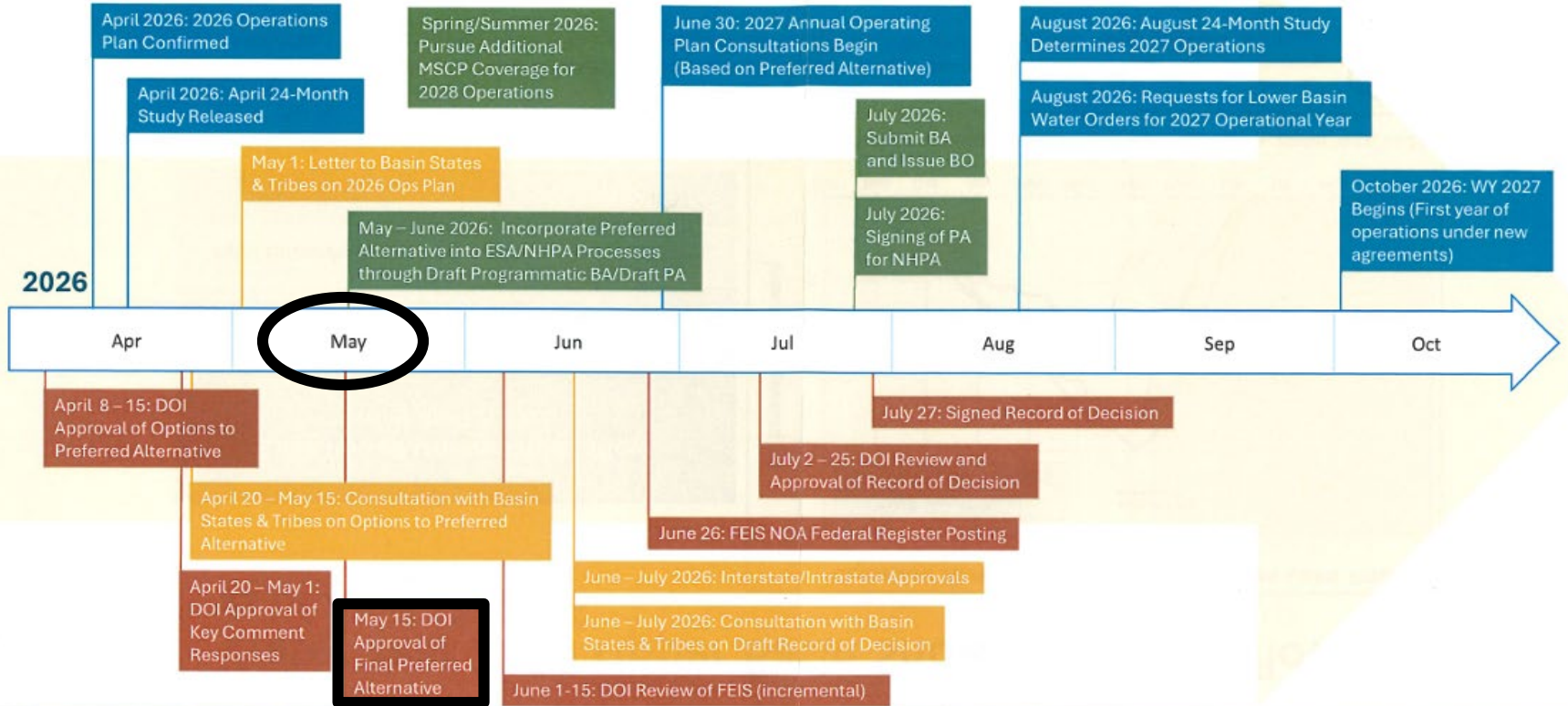
Lower Division States Short-Term Proposal

- 2026-2028 near-term bridge while long-term guidelines are finalized
- Lake Powell release volumes/operations with extremely low hydrology
- Upper Initial Unit management/flow releases to support Lake Powell
- Previously proposed Lower Basin reductions
 - CA 440,000 AFY (35% of 1.25 MAFY, 10% of CA apportionment)
 - AZ 760,000 AFY (61% of 1.25 MAFY, 27% of AZ apportionment)
 - NV 50,000 AFY (4% of 1.25 MAFY, 17% of NV apportionment)
 - MX 250,000 AFY (prorata reduction estimate, subject to binational coordination)
- Additional Lower Basin system conservation (700,000 – 1,000,000 AF) with appropriate federal funding (CA≈300 KAF/AZ≈300 KAF/NV≈100 KAF)
- ICS Flexibility, Tribal Pools & Infrastructure/System Improvements



Operational Timeline

ESA / NHPA Processes



Key Partner and Stakeholder Outreach

Post-2026 DOI Decisions and Approvals

